

Chuck Close

Inspired ANALOGOUS

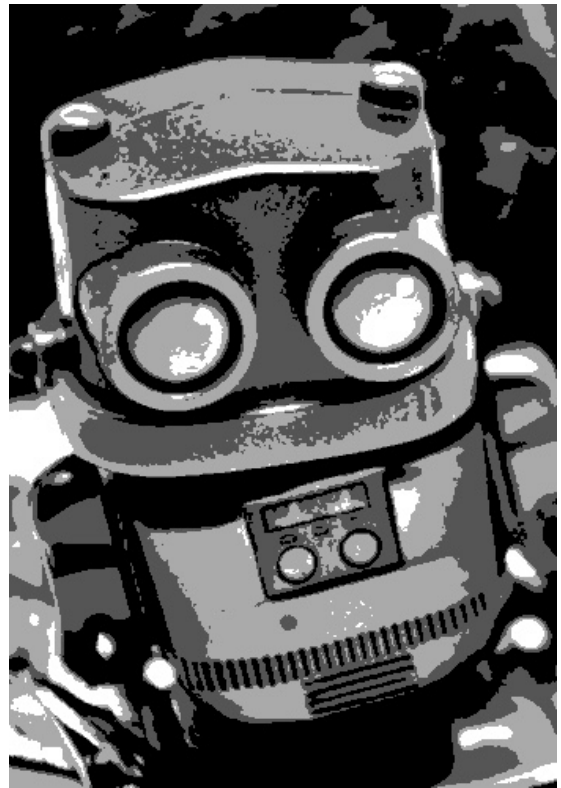
Animal/ Figurine “Portrait”

OBJECTIVE:

- To use a grid to create accurate proportions of an edited image.
- Use an analogous color scheme to create values in the portrait.
- Patterns should be added in each square of the grid in accurate tints and shades

DIRECTIONS:

1. First students will pick a portrait photo (animal or figurine) and alter it in Pixlr or Photoshop to create 4 separate values and print out as a 4x6 black and white photograph.
2. Next, students will grid the photo with 1 inch squares. They will also grid a 8 x 12 paper into 2-inch squares. (It will be an increase of 200%)
3. Students will then use the grid to draw the contours based in the squares in the photograph.
4. Once the contours are drawn, students should add a 1 inch grid to the 8x12 paper.
5. Students should then pick out a color that will match the emotion shown in their photograph and mix 3 versions of that chosen color.
6. Then students will create a value scale using the base colors along with white and black to create 4 different values within their chosen color. (see handout)
7. Students will then number each shade 1-4 and correspond those to the 4 different values in the photograph. (1 is lightest, 4 the darkest)
8. Next, students will use the lightest values to create patterns within the white squares, getting darker as they move to the grey and black squares of the photograph. (see handout)
9. When students are finished, they will paperclip the rubric and photograph to the finished work and turn in.





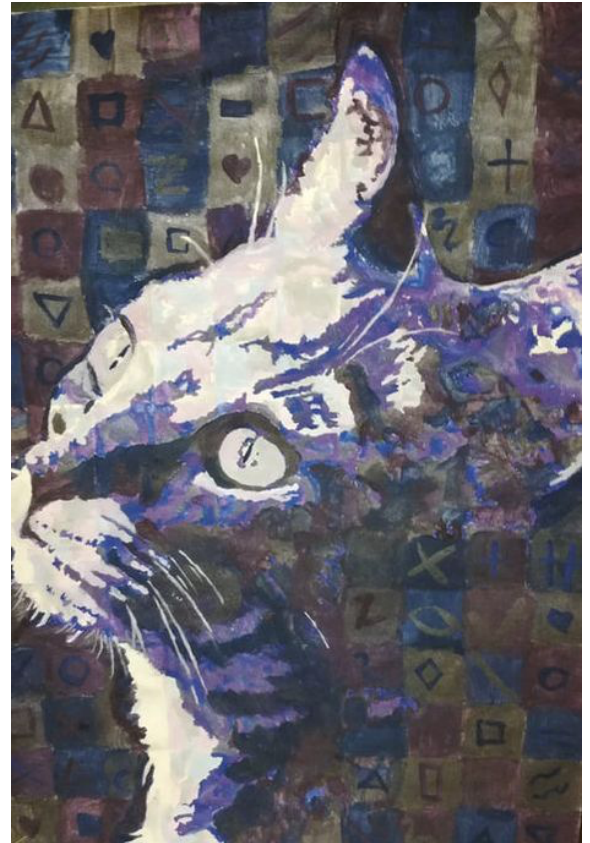
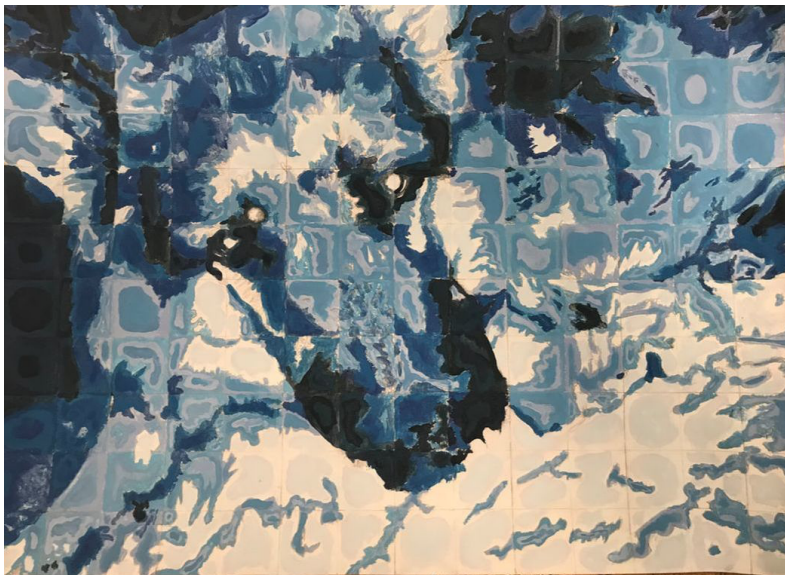
Once you pick your color for your portrait, you will mix a large amount of your main color and use that to mix the rest.

#1: the whites in the photo= mostly white paint with a little main color.

#2: the light grey in the photo= about 1/2 white paint, 1/2 the main color.

#3: the dark grey in the photo= the main color.

#4: the blacks in the photo= the main color mixed with a little black.



Student Name:

Assignment:

Chuck Close Analogous animal/ figurine "portrait"

Circle the number in pencil that best shows how well you feel that you completed that criterion for the assignment.

Criteria 1 – Accuracy: Students measured the parts of the figurine/ animal portrait accurately. Subject is drawn accurate from the photograph.

Criteria 2 – Value: Student understands the concept of value within each color. Paint is mixed to get the accurate value of the area they are looking at. Range of values from dark to light.

Criteria 3 – Patterns. Students have chosen good, Chuck Close inspired patterns within the color values used.

Criteria 4 – Effort: took time to develop idea & complete project? (Didn't rush.) Good use of class time?

Criteria 5 – Craftsmanship – Neat, clean & complete? Skillful use of the art tools & media?

Total: 50 x 2

(100 possible points)

Grade:

Excellent	Good	Average	Needs Improvement
10	9 – 8	7	6 or less
10	9 – 8	7	6 or less
10	9 – 8	7	6 or less
10	9 – 8	7	6 or less
10	9 – 8	7	6 or less