



----- 3 color reduction -----

1. Mrs. Denison will take a photo and change it on Photoshop to make it b&w with 4 layers.
2. Next, Ms. Denison will show you how to grid your image and draw your image onto the 6x8 paper.
3. Then, you will use tracing paper to trace your image 3 times and practice what color scheme you want to do by shading each section with the proper color in colored pencil.
4. You will then transfer your drawing onto your 6x8 linoleum block.
5. Once your design is drawn out, you will carve out the WHITE areas using the Linoleum cutting tools.
6. Once you have carved out all the white, you will then begin printing your first color layer. (see Mrs. Denison's demo) Print at least 10 variations.
7. Then carve out all the areas that you want to be the light color, and print on top of the previous prints with your second color.
8. Then, you will carve out anything that you want to be the second color and then print for the final time with your 3rd color.
9. Last, you will display your prints, sign them properly, and turn in the images with the rubric.

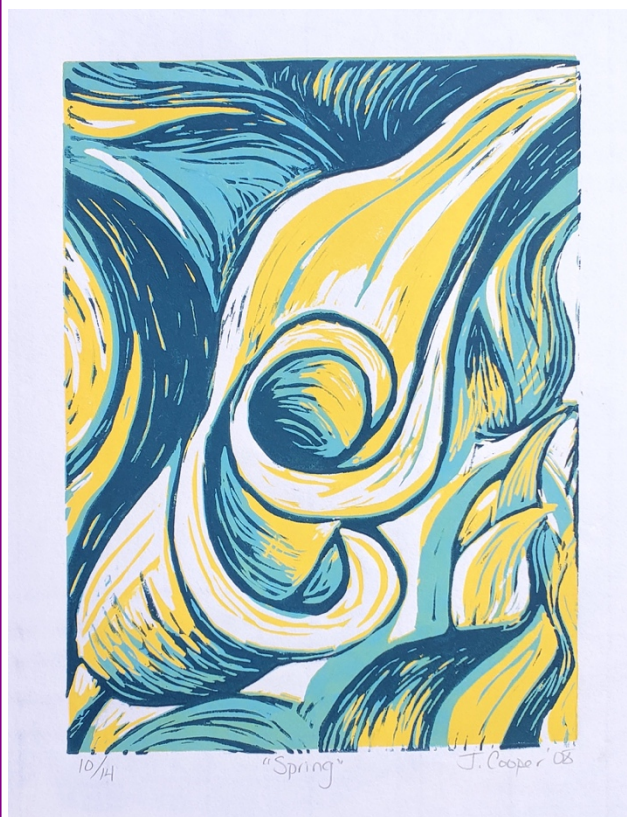
[illegible]



Fig. 1

Fig1: Three samples of a reduction block in progress. The white is carved out of the first, the lightest color out of the second, and the medium color out of the third.

Fig2: Once your design is drawn into the linoleum, you will cut out the WHITE areas using the linoleum cutting tools.

Fig3 & 4: You will use the print block to create an edition of 4 **QUALITY** prints to turn in. You may print more, but you can only turn in 4.



Fig. 2

